

# DataMite External Inductive Pickup Wiring Installation

**Important:** Do *not* kill engine by disconnecting the plug wire from the spark plug. This may cause high voltage spikes to travel back to your computer, damaging your COM port, or this inductive pickup box. Instead, ground the spark plug to kill the engine.

At higher RPM on 4 or more cylinder engines, the Inductive Pickup may stop working. There is a jumper inside the IPU (shown by arrow) which will extend this range higher. The jumper typical comes connected to only 1 leg of the jumper for storage. If you need to extend the RPM range, remove it and slide it over both legs of JP2.



**Important:** If tip is not insulated, do not get it near metal spark plug tip. Also, if something prevents plug from firing (fouled plug, missing plug, broken plug wire) the high voltage can jump to this Inductive Pickup box and damage it. These things are not covered by warranty.

Tie wrap or clip purple wire from Inductive Pickup to spark plug wire. Sometimes you may have to remove the clip top place purple wire next to coil or spark plug for COP (coil on plug) engines.

Mounting Tip: To avoid excessive vibration, it is best to mount OFF the engine stand. If possible, leave the box hang its connecting cable.

**If you are getting erratic Engine RPM readings:** Adjust the sensitivity knob (or screw through the hole in the top on earlier versions). Clockwise (CW) rotation makes the system LESS sensitive. Many times you want to go LESS sensitive to improve the readings.

Another thing to try is to click on "Preferences" (top of main screen), then the "Calculations, cont.," then change the DataMite III USB Frequency Signal settings from whatever it is to the other choice.

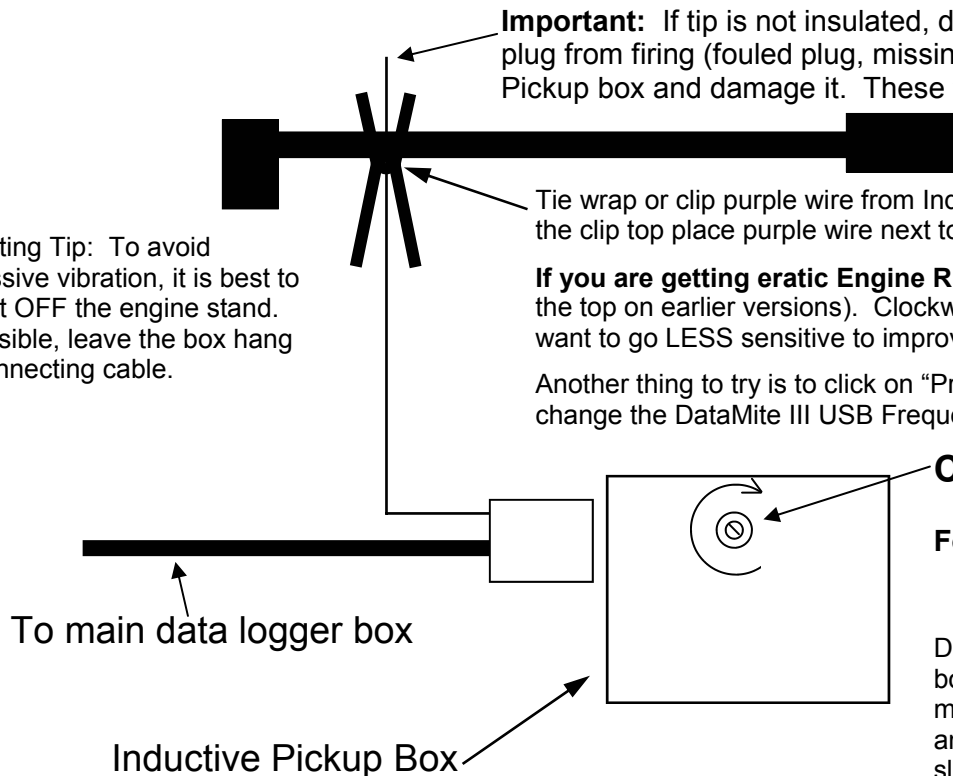
**Clockwise, Less sensitive (boxes with knob)**

**For older boxes, with screw inside hole in top of box:**

**Counter Clockwise, Less sensitive (old boxes)**

**Clockwise, Less sensitive (newer boxes w blue button)**

DO NOT let metal screwdriver slip off screw or you risk shorting out the board inside. Box typically comes from factory with sensitivity set to maximum sensitivity. This is a 15 turn pot, so you can make several turns and still have adjustment. When it gets to either end of adjustment, it just slips (you may feel it click) to avoid damaging the adjustment potentiometer.



The **BB2-IPUP** replaces the Inductive Pickup Box shown above. This connector plugs into same harness connector as where the Inductive Pickup Box would plug into.

**BB2-IPUP** inductive pickup for low voltage wires like coil (12V) primary wire, fuel injector wire, etc.

Check the additional instructions packed with this **BB2-IPUP** for attaching this end to various signal wires.

