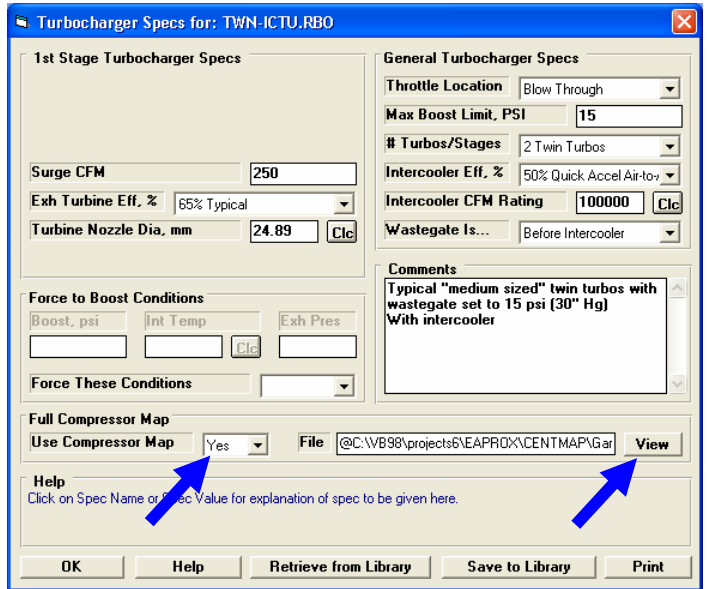


Engine Analyzer Pro Enterprise Edition

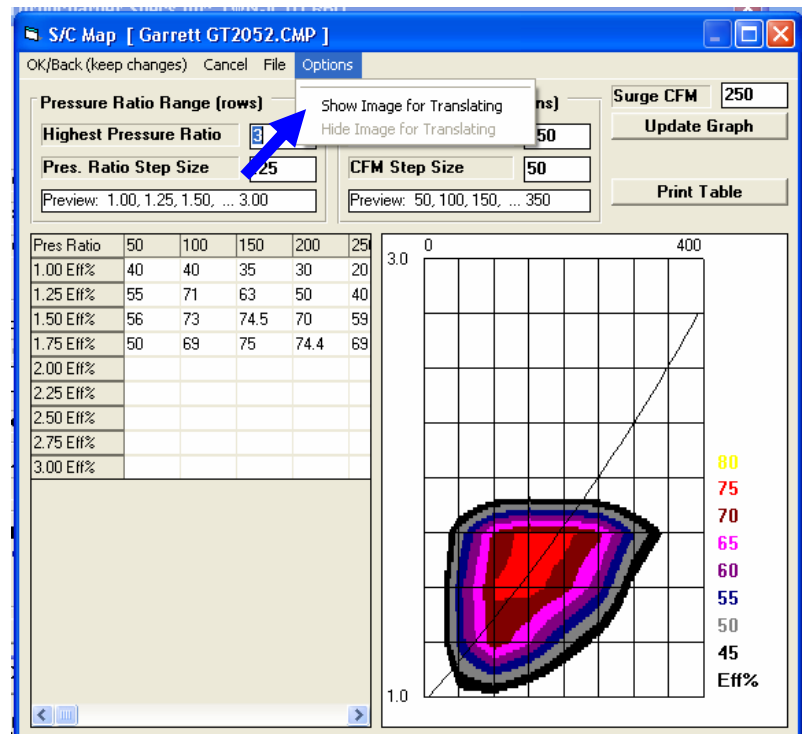
Translating a Graphics File Turbo Map into the Turbo Map screen

In the Turbo specs screen, set Use Compressor Map to Yes. Then click on the View button

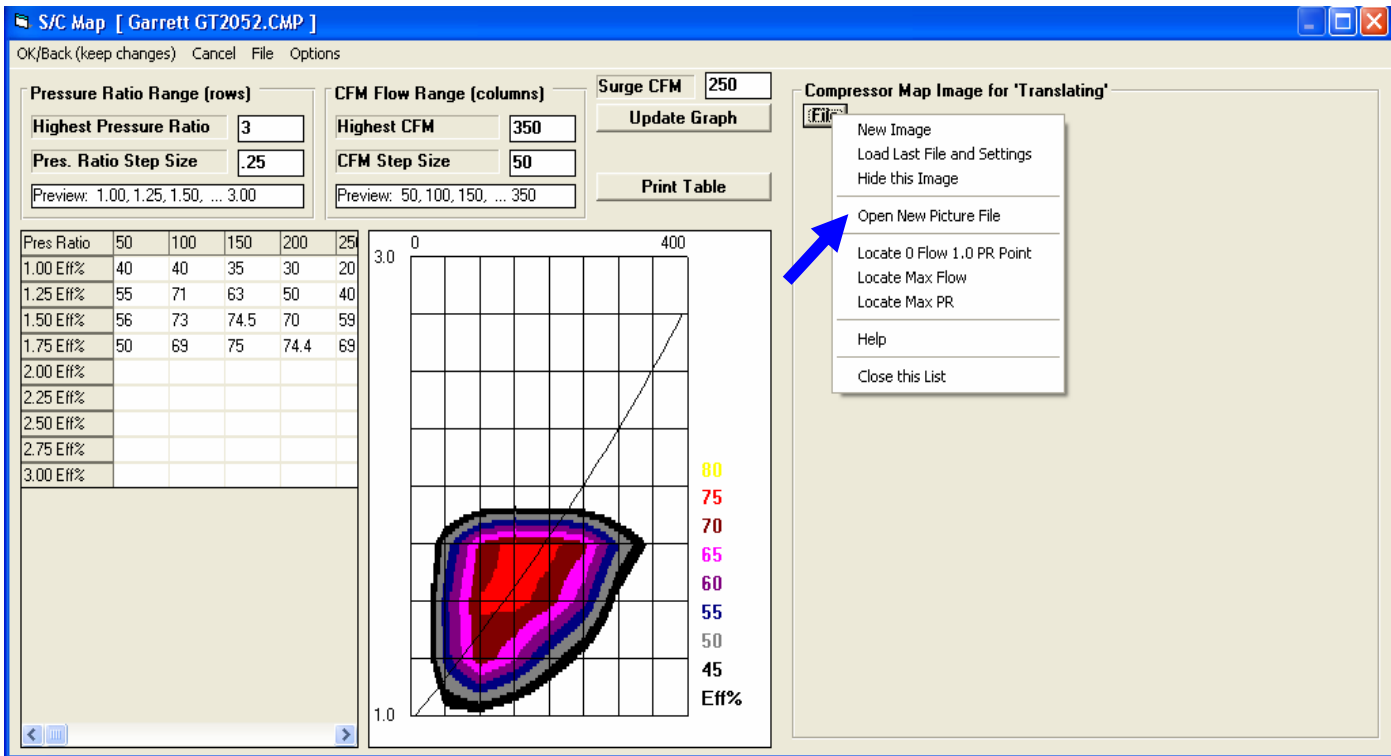


Fill in the Pressure Ratio Ranges and CFM Flow Ranges specs to tell program how many data points you want to enter for your particular map.

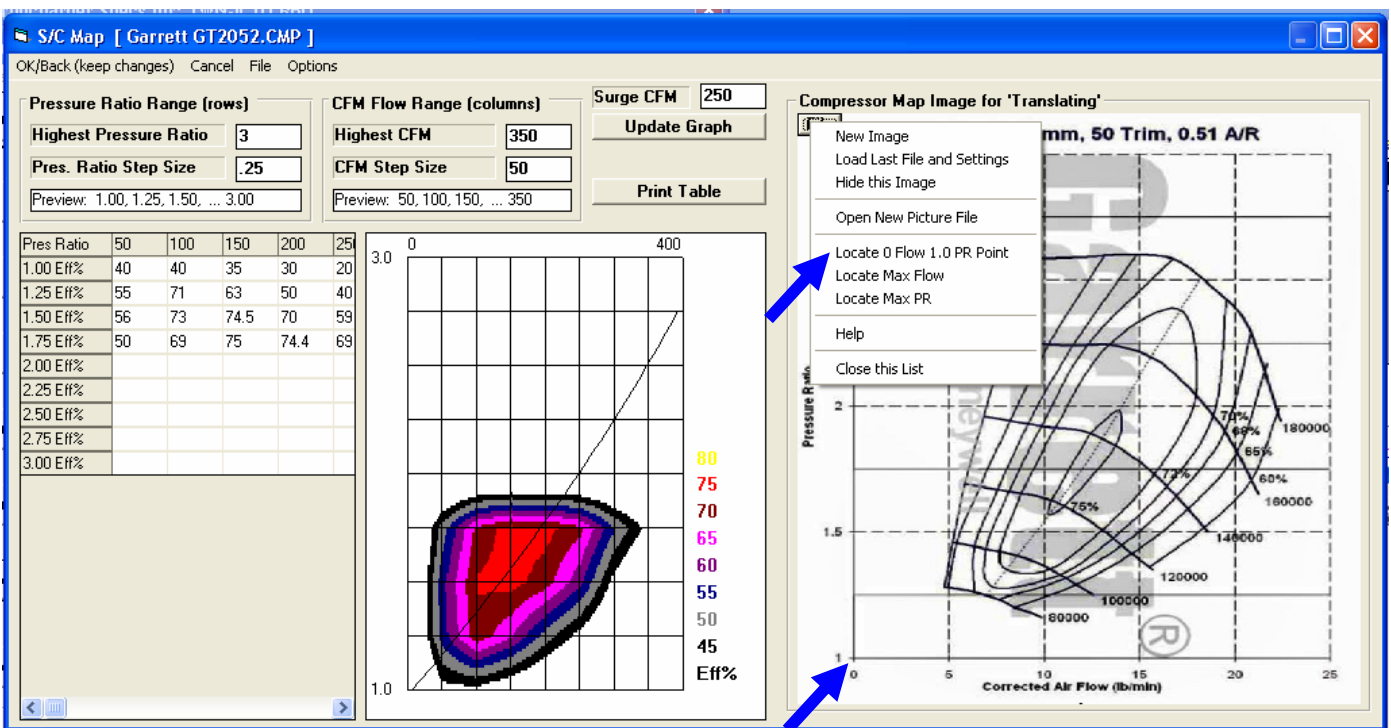
Click on Options, then Show Image for Translating for screen on next page.



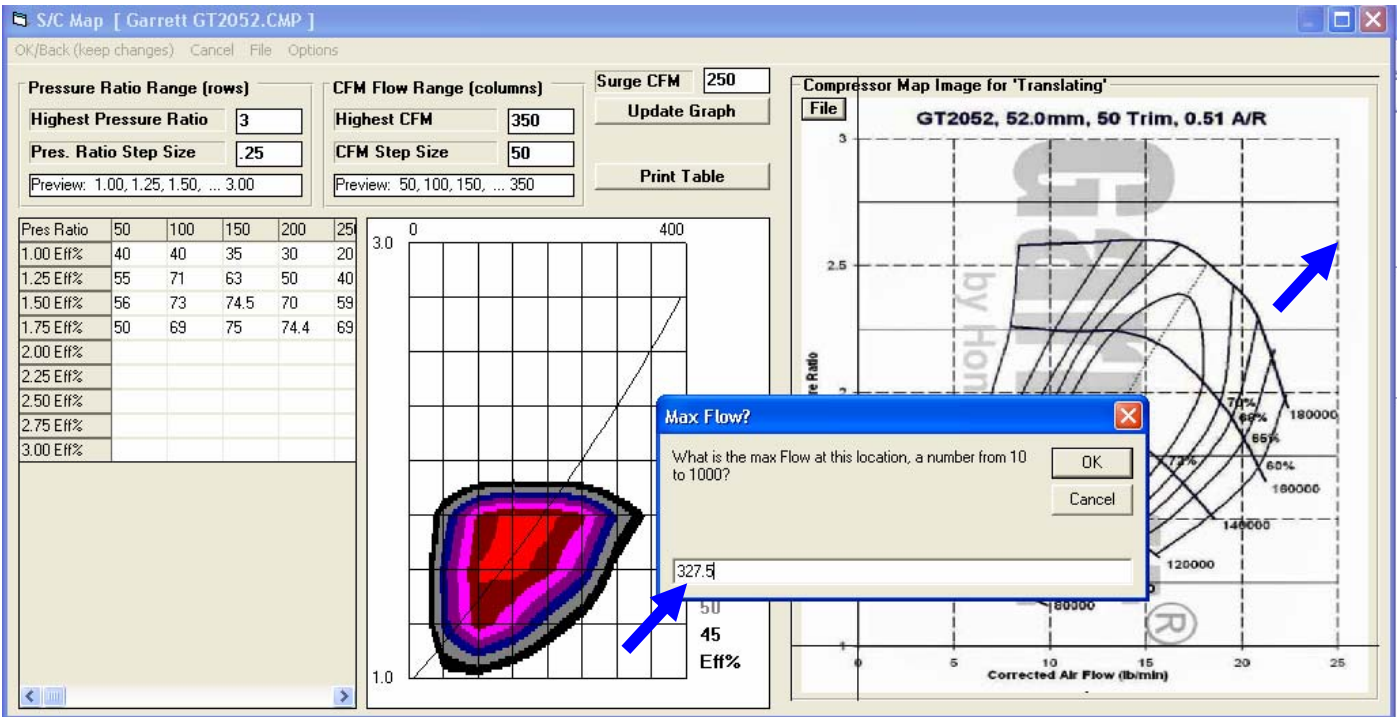
A new section of screen opens to the right. Click on the File button for a list of options. Click on the Open New Picture File and browse to a graphic image file of the turbo map you want to Translate to the Engine Analyzer program. These are typically .jpg files which you can get from the internet.



Once the image is loaded, you need to define the max limits of the turbo map image. Click on "Locate 0 Flow and 1.0 PR Point" option and then click on that point in the lower left corner of the map. Lines will be drawn for the lower and left boundaries of the map image.



After left and bottom limit lines are drawn, click on “Locate Max Flow” option and then click on the right limit of the image. In this case, the right limit of flow is 25 lb/min. Click any place on the vertical 25 lb/min line. The program asks you what is the flow at this line. To convert lb/min to CFM, multiply by 13.1, which is 327.5.



Do the same to identify the Max PR line. Click on the “Locate Max PR” option in the list, then click on the 3 PR line and enter the value of 3. The image below shows the image with boundary lines show on all 4 sides.

Now when you click in the grid to enter an efficiency value, a pink cross hair is drawn on the image so you can precisely read the efficiency value off the image.

